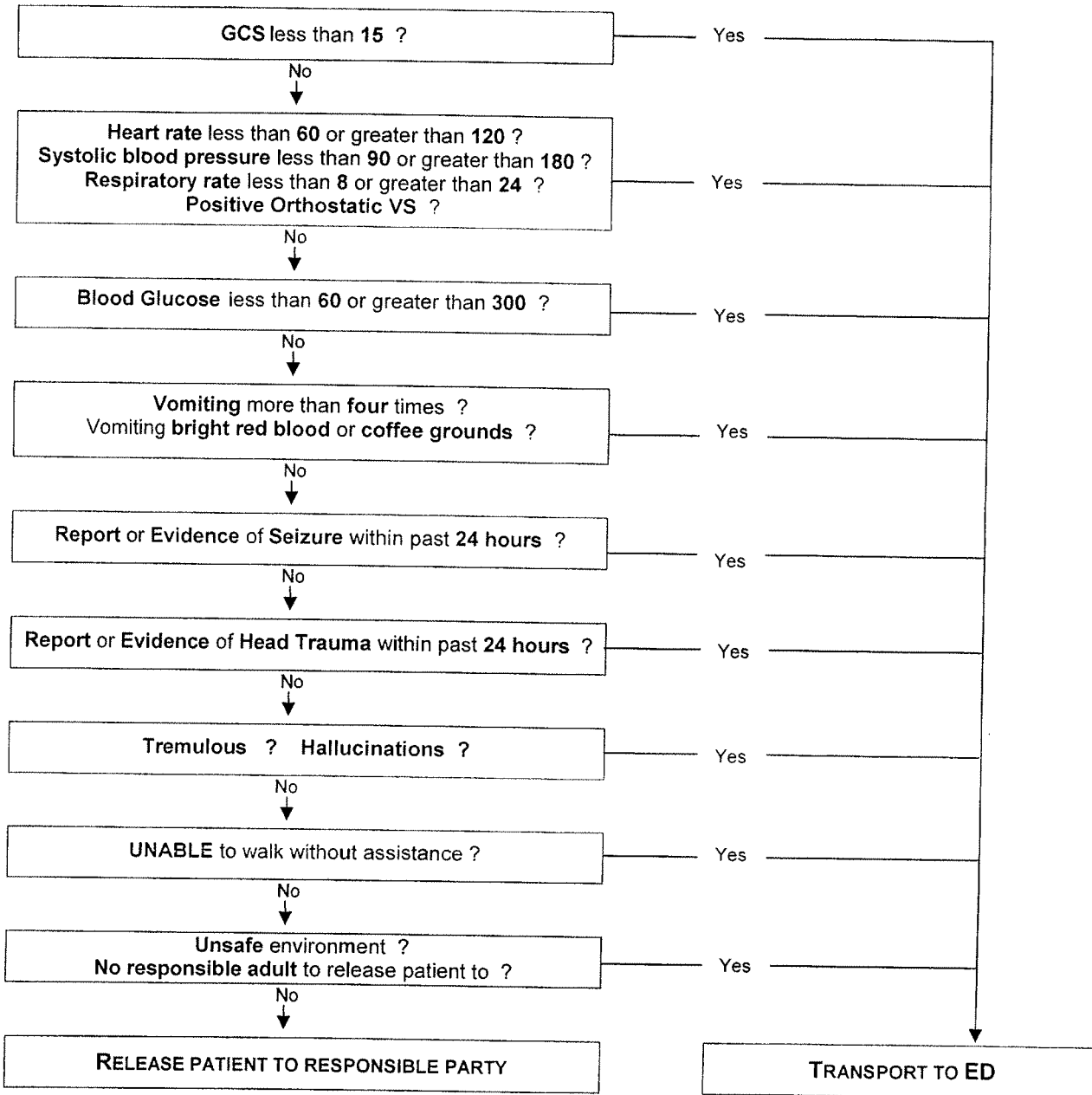




Non-Impaired Individual with Admitted Consumption / Odor of Alcohol on Breath Wishing to Refuse Medical Care and Transport

History: <ul style="list-style-type: none"> • Medical History • Quantity / Duration of ETOH use • Medications (Rx or recreational) 	Signs and Symptoms: <ul style="list-style-type: none"> • Level of consciousness • Vomiting • Staggered gait • Slurred speech • Blurred vision 	Assessment Considerations: <ul style="list-style-type: none"> • Diabetic • Psychiatric • Overdose • Stroke/Neuro • Any Altered Mental Status
--	---	--



Pearls:

- Exam: Mental Status, Neuro, Vital Signs
- Serious medical conditions can present as inebriation. It is the pre-hospital provider's responsibility to rule out other causes.
- Unsafe environment means a place where physical injury (trauma or hypo/hyperthermia) is probable.

Disposition:
EMS Transport: Abnormal VS, GCS, glucose, possible hemorrhage, possible seizure
 Other patients not released to responsible party